

MONTHLY MEMBERSHIP PROGRESS REPORT

District 118 Y

Results as of: 3/31/2026

GMT:

LOCATION Republic of Türkiye

GMT CA

| Clubs | | | |
|-----------------------|---------------|-----------|---------------|
| RESULTS FOR 2025-2026 | | | |
| QUARTER | NEW CLUB GOAL | NEW CLUBS | DROPPED CLUBS |
| JULY/AUG/SEPT | 0 | 0 | 0 |
| OCT/NOV/DEC | 1 | 0 | 0 |
| JAN/FEB/MAR | 0 | 0 | 0 |
| APR/MAY/JUNE | 0 | 0 | 0 |

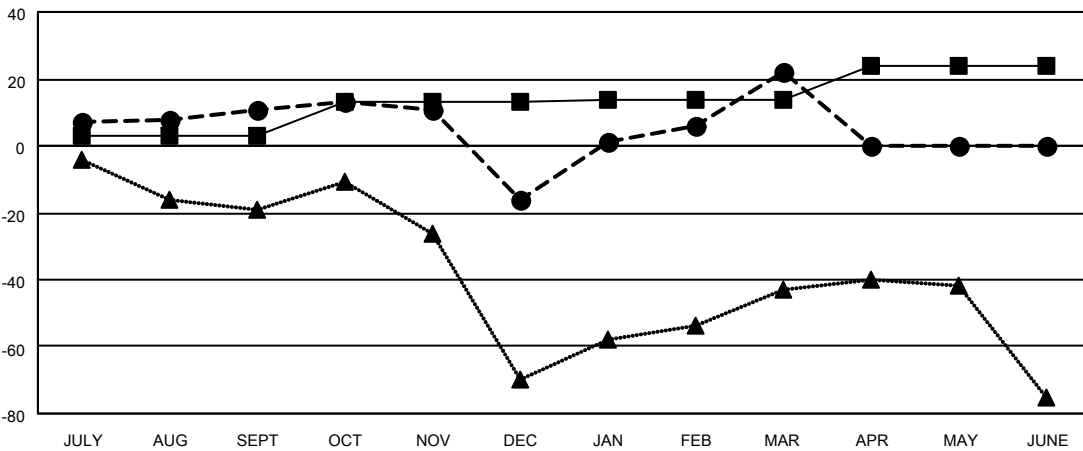
| Members | | | |
|-----------------------|------------------------|----------------------|--|
| RESULTS FOR 2025-2026 | | | |
| QUARTER | MEMBER GROWTH NET GOAL | MEMBER GROWTH ACTUAL | DROPPED MEMBERS ACTUAL (including transfers) |
| JULY/AUG/SEPT | 3 | 26 | 11 |
| OCT/NOV/DEC | 10 | 17 | 41 |
| JAN/FEB/MAR | 1 | 45 | 6 |
| APR/MAY/JUNE | 10 | 0 | 0 |

GOALS AND ACTUAL NEW CLUBS CUMULATIVE



- - CURRENT YEAR GOALS FOR NEW CLUBS
- - CURRENT YEAR ACTUAL NEW CLUBS
- ▲ - LAST YEAR ACTUAL NEW CLUBS

GOALS AND ACTUAL MEMBERS CUMULATIVE



- - MEMBER GROWTH NET GOAL
- - MEMBER GROWTH ACTUAL
- ▲ - LAST YEAR MEMBERSHIP ACTUAL

| | | |
|------------------------|---|-------------------------------------|
| DROPPED CLUBS: 0 | 36 CLUBS OF 53 ADDED 1 OR MORE NEW MEMBERS | GENDER DISTRIBUTION |
| | | MALE 465 (36.79%) |
| | | FEMALE 796 (62.97%) |
| DROPPED MEMBERS | CLICK HERE FOR CUMULATIVE MEMBERSHIP DATA | TOTAL FAMILY UNIT MEMBERS 252 |
| DECEASED 3 | | FAMILY MEMBERS PAYING HALF DUES 135 |
| CLUB CANCELLED 0 | | |
| OTHER 54 | | |
| TOTAL 57 | | |